



CUP/4





TRAIN STATION, TOKYO (JAPAN)

CUPA **leads the world in slate production**. Our 16 quarries and 22 processing plants combine the latest technology with our traditional know-how and craftsmanship.

Using cutting-edge production and quality controls, CUPA produces unique, globally recognized natural slates that meet or exceed all international standards.

LEADERS

CUPA proudly supplies one in every three roofing slates around the globe.

QUALITY

Our unique traceability system tracks each individual slate from the moment they are extracted, helping us maintain our commitment to quality.

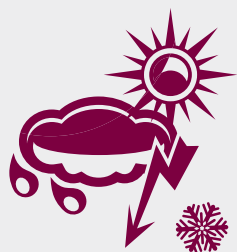
INTERNATIONAL

We export 98% of our slate production to countries across 5 continents, and have regional offices in Spain, France, United Kingdom, Benelux and USA.



CORPORATE HQ

“Our strong commitment to **quality**, constant **innovation** and **sustainability** makes us world leaders in natural slate.”



DURABILITY

Used since roman times, slate is an outstanding material that has stood the test of time. Extraordinary long-lived, remarkably durable, fire resistant and naturally waterproof, natural slate is simply the highest quality roofing material.



ECO-FRIENDLY

Natural slate is the material with less environmental impact due to its simple manufacturing process. Once extracted, natural slate simply needs to be cut to the required size and packaged for distribution.



BEAUTY

Slate is a naturally beautiful material that can be found in various shades of black and grey depending of its composition. Our slates cover some of the most iconic buildings around the world, and enhance the value and beauty of any property.

A CORUÑA

CUPA 98

LUGO

CUPA 18
CUPA 12



SPAIN

LEON

"LAS MÉDULAS"

Puente de Domingo Flórez

CUP4

OURENSE

GALICIA

CUPA 2

CUPA 5

CUPA 7
CUPA 6
CUPA 3

CUPA 10

CUPA 25

CUPA 13

CUPA 4

CUPA 14

CASTILLE
AND LEON

CUPA 27
CUPA 17

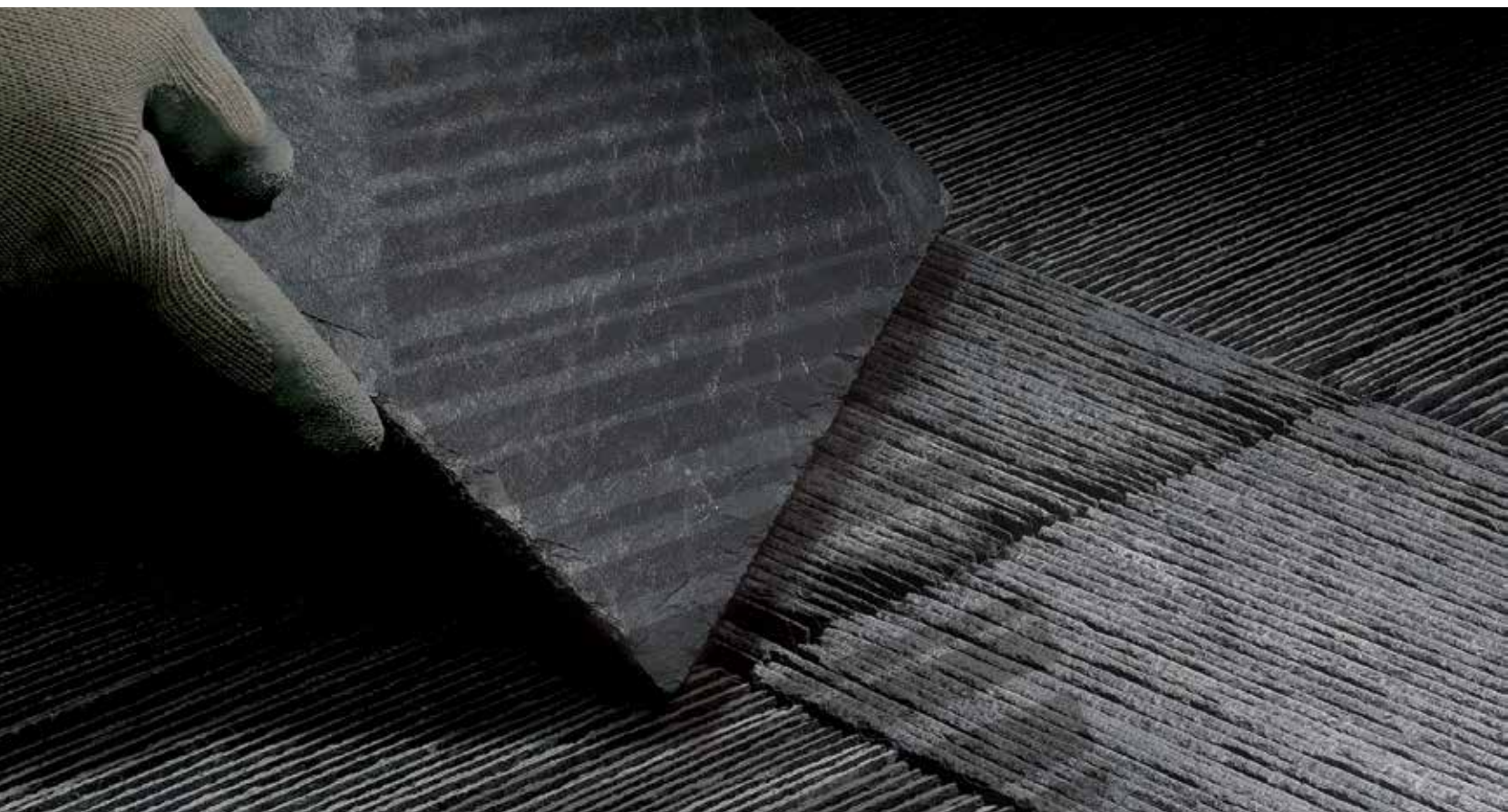
ZAMORA

CUPA 9

OUR
QUARRIES

APPROVALS AND CERTIFICATIONS

CUPA natural slates meet or exceed all international quality standards.



TRACEABILITY

CUPA has developed a unique traceability system that identifies each individual slate we produce.

This system ensures complete quality control, and allows us to provide better information to our clients.

All CUPA natural slate crates carry a barcode and detailed production and quality inspection data. Each barcode is unique, enabling reliable identification of individual crates and containing information about the origin of the slate, dimensions, type, test

results and quality inspections. Our traceability system even provides information about where and when the slate was processed, and what personnel worked on every individual batch.

ECOLOGY

Building the cover of your house (100 m²) with natural slate instead of fiber cement **avoids the emission of more than 6.2 tons of CO₂**, the amount of pollution an average car produces in 30,000 km.

Source: www.greenbooklive.com

CLIMATE CHANGE

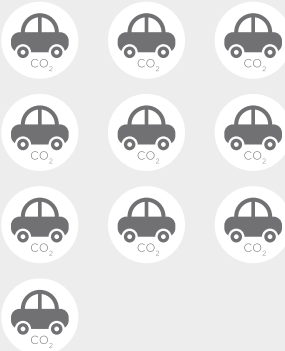
NATURAL SLATE

3,800 kg eq CO₂ / 100 m² roofing.



FIBER CEMENT

10,000 kg eq CO₂ / 100 m² roofing.



ZINC

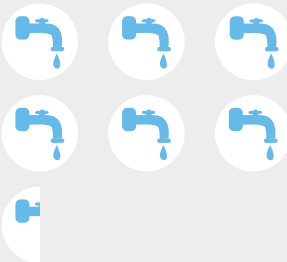
5,500 kg eq CO₂ / 100 m² roofing.



WATER CONSUMPTION

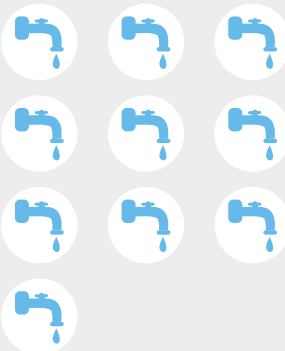
NATURAL SLATE

65,000 litres / 100 m² roofing.



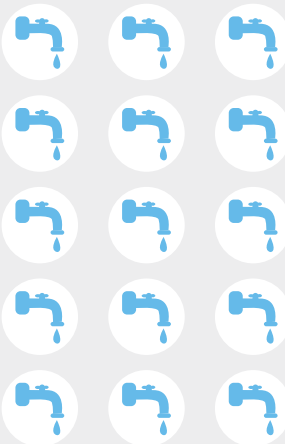
FIBER CEMENT

100,000 litres / 100 m² roofing.



ZINC

440,000 litres / 100 m² roofing.



Building the roof deck of your house (100 m²) with natural slate instead of fiber cement means **saving 35,000 litres of water**, an average person's consumption in 228 days.

Source: www.greenbooklive.com

FOSSIL FUEL DEPLETION

NATURAL SLATE

24,722 kWh of electricity with a 100 m² roofing.



FIBER CEMENT

41,722 kWh of electricity with a 100 m² roofing.



ZINC

39,000 kWh of electricity with a 100 m² roofing.



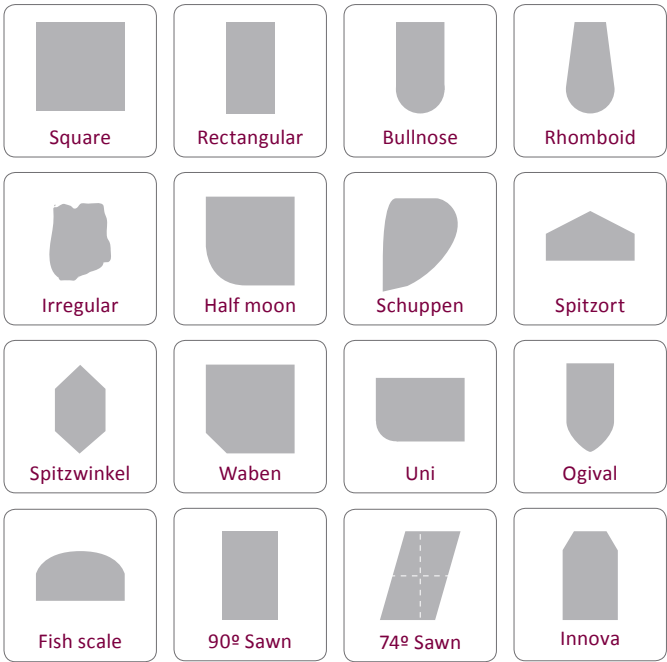
Building the roof deck of your house (100 m²) with natural slate instead of fiber cement **saves 17,000 kWh**, roughly equivalent to the annual electric consumption of an average house in the UK.

Source: www.greenbooklive.com

TRADITIONAL SLATE ROOF

CUPA extracts a wide range of natural slates from different quarries, available in multiple shapes and sizes.

COMMON SHAPES*



SIZES*

From 30x20 to 60x30.

**Please contact our sales department for any other shapes and sizes.*



SELECTIONS



**R**

The result of a rigorous selection. Composed of exceptionally flat natural slates with uniform thickness. Simple and fast installation.

H

High-quality selected natural slates with slight flatness and thickness variations that meet or exceed all international standards.

NATURAL

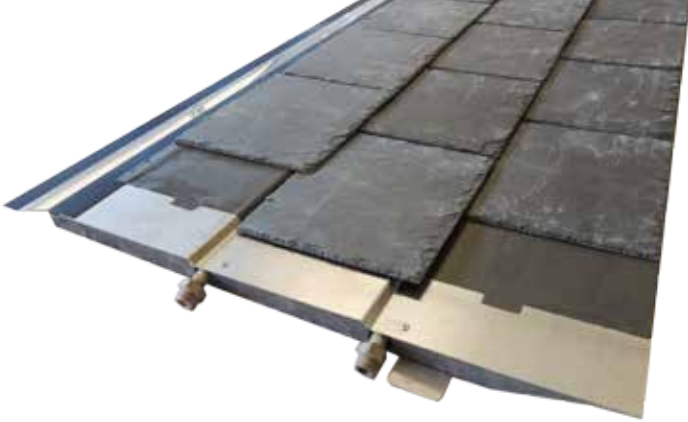
Composed of natural slates with some flatness and thickness variations. This selection maintains the same quality standards, but requires an experienced roofer.

HEAVY

Exclusive hand-quarried 7-9mm thick natural slates. Our incomparable HEAVY slates give any roof a unique and timeless rustic look.

THERMOSLATE

by CUPA



THERMOSLATE™ is **the first and only natural slate solar panel** that successfully combines energy efficiency with aesthetic architectural integration and almost zero maintenance.

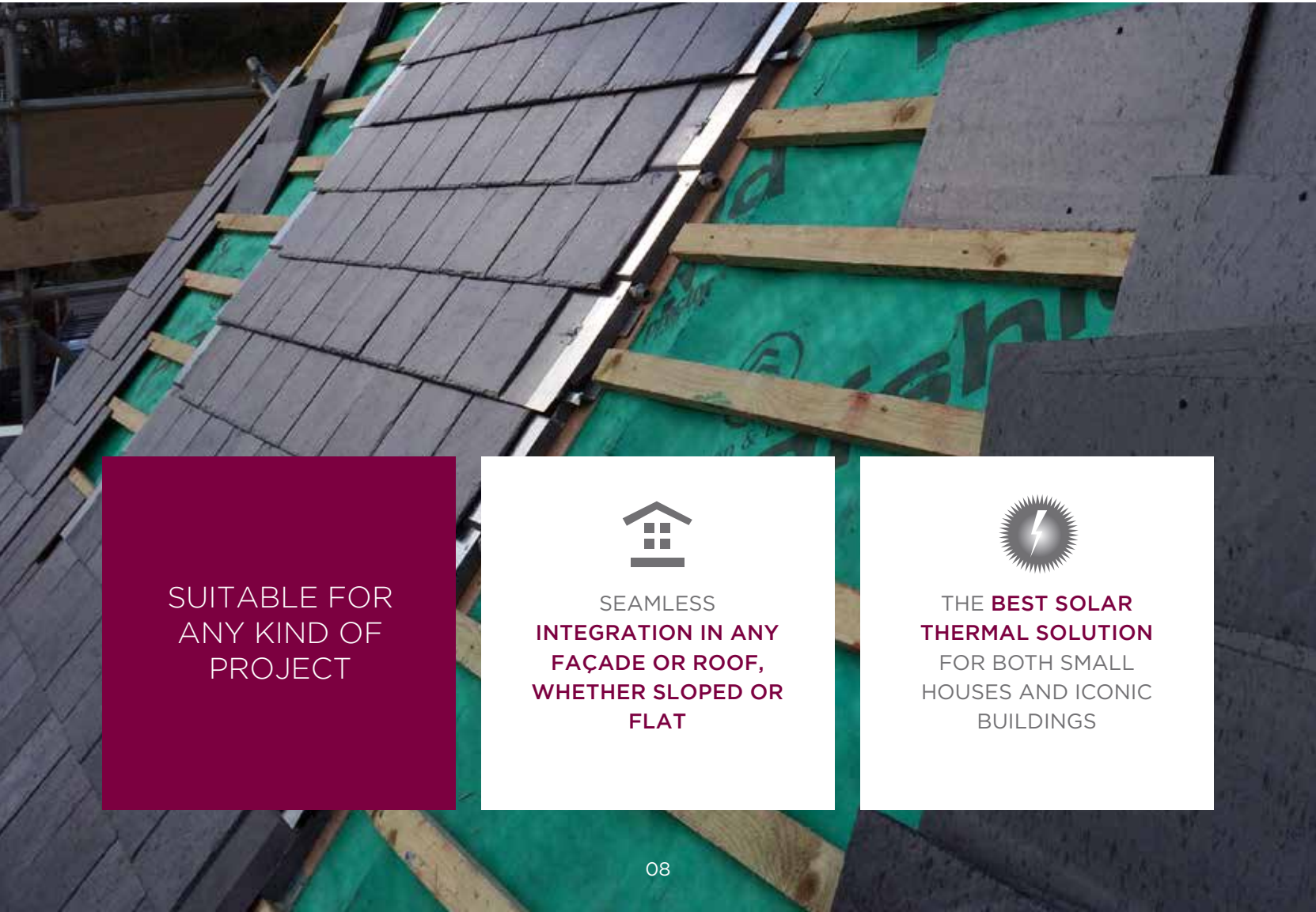
CUPA is proud to present **a unique and innovative renewable energy solution** that takes full advantage of the incomparable qualities and performance of natural slate.

THERMOSLATE™ is seamlessly integrated in any façade or slate roof (pitched or flat) and produces energy for heating and DHW (domestic hot water). Born to

solve aesthetic issues when rehabilitating natural slate roofs, whether they be iconic buildings and monuments or small houses.

THERMOSLATE™ helps maintain and improve both the aesthetics and efficiency of buildings, is easily installed and requires almost zero maintenance.

THERMOSLATE™, THE FIRST NATURAL SLATE SOLAR PANEL



SUITABLE FOR
ANY KIND OF
PROJECT



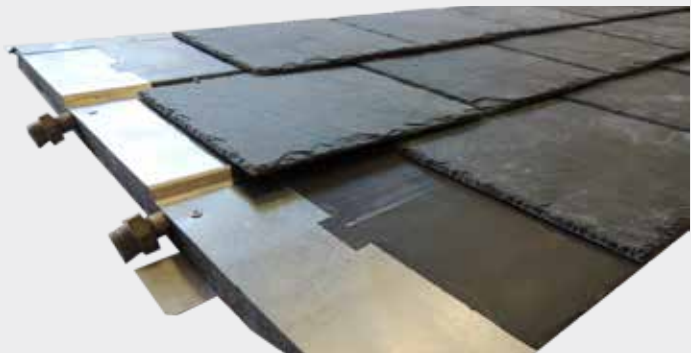
SEAMLESS
INTEGRATION IN ANY
FAÇADE OR ROOF,
WHETHER SLOPED OR
FLAT



THE **BEST SOLAR**
THERMAL SOLUTION
FOR BOTH SMALL
HOUSES AND ICONIC
BUILDINGS

THERMOSLATE™
SLOPED ROOF SYSTEM/

THERMOSLATE™ solar panel system for sloped roofs can be seamlessly integrated into any slate roof, producing enough energy to cover the heating and DHW needs of an average British household.



THERMOSLATE™
FLAT ROOF SYSTEM/

THERMOSLATE™ solar panel system for flat roofs produces enough energy for DHW and pool heating in houses without sloped roofs or a non-optimal orientation.



INTERNATIONAL
CERTIFICATIONS:



NEWTOWN LINFORD, LEICESTER (UNITED KINGDOM)



COMPATIBLE WITH
ANY **ENERGY STORAGE**
AND **DISTRIBUTION**
SYSTEM



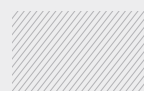
COMPATIBLE WITH ANY
TYPE OF **BOILER**

CTE

IN ACCORDANCE
WITH **INTERNATIONAL**
REGULATIONS

CUPACLAD™

Natural slate ventilated façade



CUPACLAD™ is a ventilated façade solution with CUPA natural slate. The natural slate chosen for CUPACLAD™ systems has been specially selected to meet the requirements of a façade cladding.

CUPACLAD™ systems are timeless, lightweight and easy to install. They adapt to all kinds of architectural creation, both in new construction and renovation, providing a modern and contemporary aesthetic.

Traditional natural slate cladding has been reinvented to make it much easier to install and quicker. In addition to this, the use of a ventilated façade is the perfect choice for external thermal insulation.

CUPACLAD™ makes possible the installation of natural slate with horizontal orientation, offering new design possibilities for contemporary architecture. The beauty and durability of natural slate makes it the perfect material for any architectural design.

The development of CUPACLAD™ fixing method has been the result of a design process carried out by our own engineering team.

CUPACLAD™, THREE DIFFERENT SYSTEMS, DEPENDING ON THE INSTALLATION PROCESS AND THE DESIRED APPEARANCE:

CUPACLAD™ 101

Invisible fixing system. The slate is installed horizontally and it's fixed with two stainless steel screws. The heads of the screws are under the lap and remain invisible.



**CUPACLAD™ invisible system uses size 40x20, or size 40x22 CUPA natural slates laid horizontally.*

CUPACLAD™ 201

Visible fixing system. The slate is installed horizontally and it's fixed with two stainless steel brackets. The outer part of the bracket at the bottom of every slate remains slightly visible.



**CUPACLAD™ exclusive system uses size 60x30 CUPA natural slates laid horizontally.*

CUPACLAD™ 301

Visible or invisible fixing system. The slate is installed according to the traditional way, with vertical orientation.



**Available in all common sizes.*





CUP4

Официальный представитель CUPA - ООО «Кровсервис»
Телефоны: +7 (495) 740-33-79, +7 (495) 740-34-79, +7 (495) 518-89-77
E-mail: info@krovservice.ru www.krovservice.ru

